

PLAN NOTES

- REMOVE AND DISPOSE OF ASBESTOS-CONTAINING ROOFING & FLASHING FELTS AND INSULATION DOWN TO BARE DECK. HEPA VACUUM ROOF CLEAN OF DUST, DIRT, AND DEBRIS. MECHANICALLY LOWER ROOFING TO BLADDER-LINED DISPOSAL DUMPSTERS.
- SKY

REMOVE SKYLIGHT ASSEMBLY AND ATTACHED ROOFING MATERIAL AND DISPOSE OF ASSEMBLY AS ASBESTOS WASTE IN ROOFING DUMPSTER. CLOSE OPENING IN ROOF DECK WITH 3/4" PLYWOOD. NAILGUN PLYWOOD TO DECK.
- EF

REMOVE EXHAUST FAN UNIT AND ATTACHED ROOFING MATERIAL. CUT OFF PORTIONS OF EXHAUST FAN WITH ATTACHED ROOFING AND DISPOSE AS ASBESTOS WASTE. DISPOSE OF CLEAN METAL PORTIONS OF EXHAUST FAN AS SCRAP METAL. CLOSE OPENING IN ROOF DECK WITH 3/4" PLYWOOD. NAILGUN PLYWOOD TO DECK.
- AC

DRAIN AND RECYCLE REFRIGERANT FROM HVAC UNIT. REMOVE HVAC UNIT AND ATTACHED ROOFING MATERIAL. CUT OFF PORTIONS OF HVAC UNIT WITH ATTACHED ROOFING AND DISPOSE AS ASBESTOS WASTE. DISPOSE OF CLEAN METAL PORTIONS OF HVAC UNIT AS SCRAP METAL. CLOSE OPENING IN ROOF DECK WITH 3/4" PLYWOOD. NAILGUN PLYWOOD TO DECK.
- PB

REMOVE PITCH BOX FILLED WITH ACM ROOF CEMENT AND DISPOSE OF PITCH BOX AS ASBESTOS WASTE IN ROOFING DUMPSTER. CLOSE OPENING IN ROOF DECK WITH 3/4" PLYWOOD. NAILGUN PLYWOOD TO DECK.
- RD

REMOVE AND DISPOSE OF ACM ROOF FLASHING AND CEMENT ON AND AROUND ROOF DRAIN.
- VT

REMOVE VENT TUBE WITH ADHERED ACM ROOF CEMENT AND DISPOSE OF VENT TUBE AS ASBESTOS WASTE IN ROOFING DUMPSTER. CLOSE OPENING IN ROOF DECK WITH 3/4" PLYWOOD. NAILGUN PLYWOOD TO DECK.
- GREEN

GREEN CERAMIC ROOFING IS LEAD-CONTAINING AND TCLP LEACHES LEAD >5 MG/L. REMOVE THE CERAMIC ROOFING AND DISPOSE OF AS HAZARDOUS LEAD WASTE.
- PARAPET

REMOVE GREEN CERAMIC CAPSTONES AND DISPOSE OF AS HAZARDOUS LEAD WASTE. CHIP-OFF ALL ACM FLASHING FELTS AND CEMENTS FROM MASONRY PARAPET WALL DOWN TO BARE MASONRY. DISPOSE OF REMOVED FLASHING & CEMENTS AS ASBESTOS WASTE. REMOVE SIGNAGE BOARD FROM SOUTH SIDE OF PARAPET WALL.

GENERAL NOTES

1. MECHANICALLY LOWER REMOVED ROOFING MATERIALS TO THE LINED DISPOSAL DUMPSTER – DO NOT DROP ROOFING INTO THE DUMPSTER.
2. THE WORK AT 125 WHALLEY AVENUE (PAPA JOHNS PIZZA) WILL BE CONDUCTED DURING A THIRD MOBILIZATION. THE PAPA JOHNS PIZZA BUSINESS WILL CONTINUE TO OPERATE DURING ABATEMENT OPERATIONS IN THE REST OF THE BUILDING. THE WORK AT 129 WHALLEY AVENUE (GARAGE) WILL BE CONDUCTED DURING A SECOND MOBILIZATION.
3. KEEP THE ROOF OF THE PHASE 2 & 3 WORK AREAS INTACT UNTIL THE TENANTS (GARAGE & PAPA JOHNS) ARE VACATED AND CONTRACTOR RECEIVES WRITTEN NOTIFICATION TO PROCEED WITH PHASE 2 AND PHASE 3.

This drawing is not to be reproduced or used to contract any building without the written authorization of PAUL B. BAILEY ARCHITECT, LLC. This drawing and details on it, as an instrument of service, is the property of the Architect and may be used for this specific project and shall not be loaned, copied or reproduced without written consent of the Architect.

EnviroMed

Cleaner environment. Safer workplaces.  
470 Murdock Avenue  
Meriden, CT 06450  
203-236-4846  
www.enviromedservices.com

PROJECT:  
**WHALLEY AVENUE DEVELOPMENT**  
  
117 WHALLEY AVENUE  
NEW HAVEN, CT

| ISSUE | DATE    | DESCRIPTION |
|-------|---------|-------------|
| 1     | 6/16/25 | BID SET     |
|       |         |             |
|       |         |             |
|       |         |             |
|       |         |             |
|       |         |             |
|       |         |             |
|       |         |             |

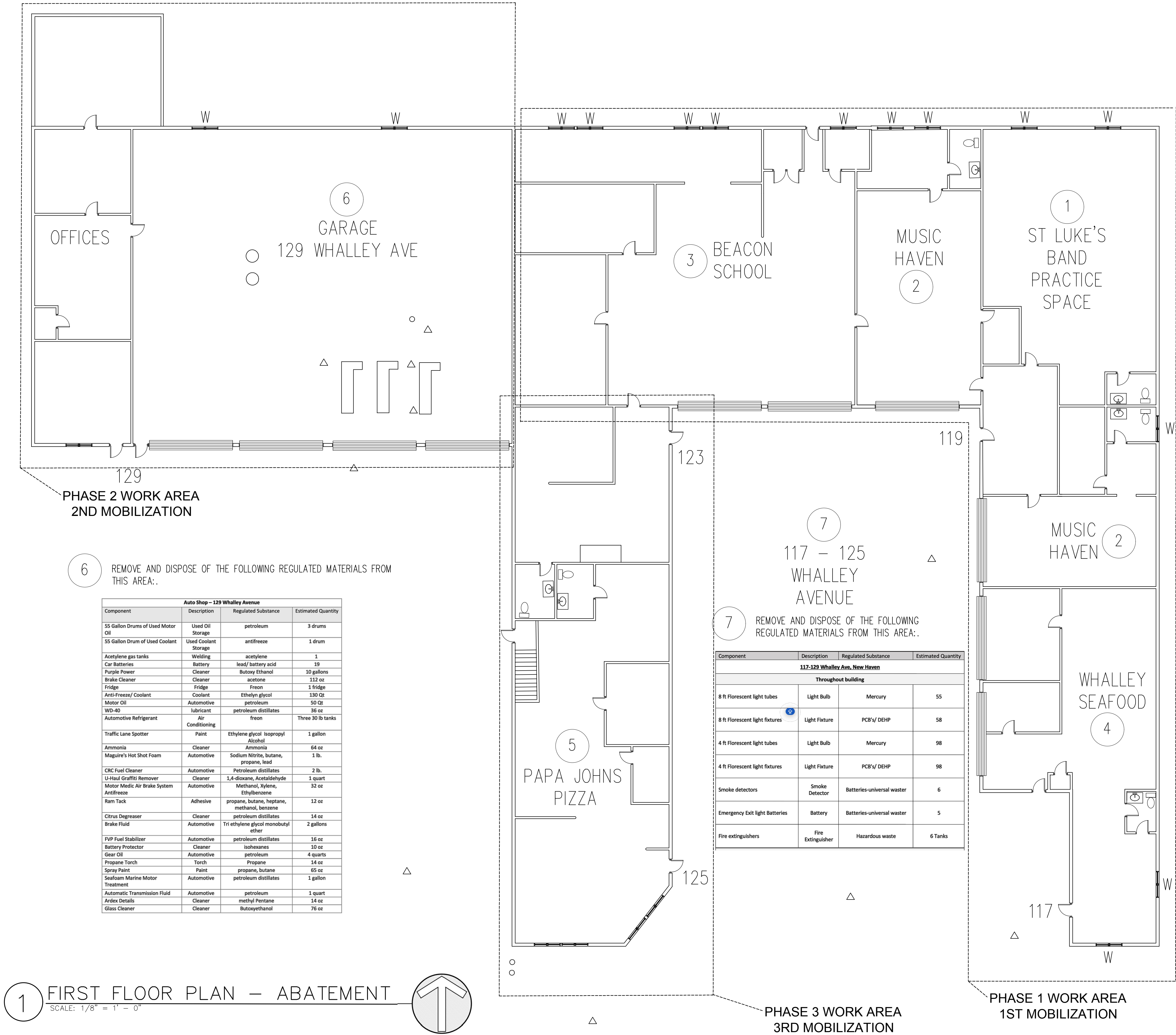
PHASE:  
**BID DOCUMENTS**

PAUL B. BAILEY  
• ARCHITECT •  
  
110 AUDUBON STREET  
NEW HAVEN, CONNECTICUT 06510  
203 • 776 • 8888 F 203 • 772 • 1365

|                     |                 |
|---------------------|-----------------|
| DATE: 6/2/25        | DRAWN BY: JL    |
| SCALE: 3/8" = 1'-0" | CHECKED BY: JEL |
| JOB NO: 20-047      |                 |

DRAWING NAME:  
**117-129 WHALLEY AVE. ABATEMENT PLANS**

HM1.1



## PLAN NOTES

W REMOVE OLD METAL WINDOW AND DISPOSE AS PRESUMED PCB BULK PRODUCT WASTE.

1 REMOVE AND DISPOSE OF THE FOLLOWING REGULATED MATERIALS FROM THIS AREA:.

| St. Lukes Band Space – 119 Whalley Avenue |                 |   |                       |
|---|-----------------|---|-----------------------|
| Component                                 | Description     | Regulated Substance                         | Estimated Quantity    |
| Thermostat                                | Thermostat      | Mercury                                     | 1                     |
| Fridge                                    | Fridge          | Freon                                       | 1 Fridge with Freezer |
| Air Conditioning Window Unit              | Air Conditioner | Freon                                       | 1 AC unit             |
| Propane Heater                            | Heater          | Propane                                     | 1 Heating Unit        |
| Gorilla Glue                              | Adhesive        | Dimethyl ether, 1,1-Difluoroethane, propane | 14 oz                 |
| Quick Color - Fast Drying Enamel          | Paint           | Acetone and Petroleum Distillates           | 10 oz                 |
| Glade                                     | Air Freshener   | Isobutane, Propane                          | 8 oz                  |
| Clorox bleach                             | Cleaner         | Bleach                                      | 30 oz                 |
| Lysol wipes                               | Cleaner         | Dimethyl benzyl ammonium chloride           | 7 oz                  |
| Fabuloso                                  | Cleaner         | L Lactic Acid                               | 40 oz                 |
| Primer-Rustoleum                          | Cleaner         | Petroleum Gas/ Acetone                      | 26 oz                 |
| Simoniz                                   | Cleaner         | Isoparaffinic Solvent, Liquid Petroleum     | 14 oz                 |
| Oust                                      | Air Freshener   | Tri ethylene Glycol                         | 12 oz                 |
| Windex                                    | Cleaner         | Isopropanol, Butoxyethanol                  | 20 oz                 |
| Lysol Toilet Cleaner                      | Cleaner         | Alkyl dimethyl benzyl Ammonium Chloride     | 1 Pint                |
| Lavender Shine                            | Cleaner         | Surfactants                                 | 5 quarts              |
| Clorox mold and Mildew cleaner            | Cleaner         | Sodium Hypochlorate                         | 1 gallon              |

2 REMOVE AND DISPOSE OF THE FOLLOWING REGULATED MATERIALS FROM THIS AREA:.

| Music Haven – 119 Whalley Avenue |               |  |                    |
|----------------------------------|---------------|--|--------------------|
| Component                        | Description   | Regulated Substance                              | Estimated Quantity |
| Glade                            | Air Freshener | Isobutane, Propane                               | 8 oz               |
| Gonzo disinfectant               | Cleaner       | Alkyl dimethyl benzyl ammonium chloride          | 1.5 pints          |
| Woolite                          | Cleaner       | Ethoxylated sulfates                             | 12 oz              |
| Fabuloso                         | Cleaner       | L Lactic Acid                                    | 17 oz              |
| Microban Sanitizing Spray        | Cleaner       | Alkyl dimethyl benzyl ammonium chloride          | 15 oz              |
| Chase's Bathroom Cleaner         | Cleaner       | butane, propane                                  | 12 oz              |
| Pine Glow                        | Cleaner       | octyl decyl dimethyl Ammonium chloride           | 1 quart            |
| Paint                            | Paint         | titanium dioxide                                 | 6 gallons          |
| Krylon - Clear Polyurethane      | Paint         | acetone, aliphatic hydrocarbons, butane, propane | 11 oz              |
| Propane Heater                   | Heater        | propane  | 1 Heater Unit      |

3 REMOVE AND DISPOSE OF THE FOLLOWING REGULATED MATERIALS FROM THIS AREA:.

| Beacon School – 123 Whalley Avenue |                  |                       |                    |
|------------------------------------|------------------|-----------------------|--------------------|
| Component                          | Description      | Regulated Substance   | Estimated Quantity |
| TAT Wasp Killer Spray              | Pesticide        | prallethrin           | 14 oz              |
| Hydrogen Peroxide                  | First Aid        | hydrogen peroxide     | 48 oz              |
| Goo Gone                           | Adhesive Remover | Petroleum distillates | 6 oz               |

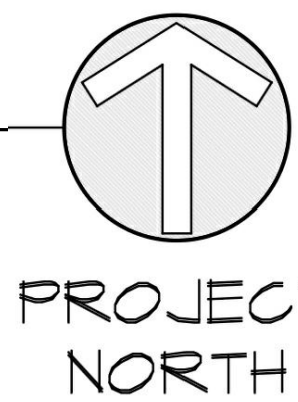
4 REMOVE AND DISPOSE OF THE FOLLOWING REGULATED MATERIALS FROM THIS AREA:.

| Whalley Seafood – 117 Whalley Avenue |                  |  |                    |
|--------------------------------------|------------------|--|--------------------|
| Component                            | Description      | Regulated Substance                      | Estimated Quantity |
| Air Conditioning Window Unit         | Air Conditioning | Freon                                    | 1 AC unit          |
| Big Red Grill and Oven Cleaner       | Cleaner          | Sodium Hydroxide                         | 1 gallon           |
| Glidden Paint Can                    | Paint            | propylidymetrimethanol, titanium dioxide | 2 quarts           |
| Wood Stain                           | Paint            | Alkyd Resin, petroleum distillates       | 2 quarts           |
| Propane Heater                       | Heater           | Propane                                  | 1 Heater Unit      |

5 REMOVE AND DISPOSE OF THE FOLLOWING REGULATED MATERIALS FROM THIS AREA:.

| Papa Johns – 125 Whalley Avenue |             |                     |                    |
|---------------------------------|-------------|---------------------|--------------------|
| Component                       | Description | Regulated Substance | Estimated Quantity |
| Fridge units                    | Fridge      | Freon               | 2                  |
| Freezer                         | Freezer     | Freon               | 1                  |

1 FIRST FLOOR PLAN – ABATEMENT  
SCALE: 1/8" = 1' - 0"



This drawing is not to be reproduced or used to contract any building without the written authorization of PAUL B. BAILEY ARCHITECT, LLC. This drawing and details on it, as an instrument of service, is the property of the Architect and may be used for this specific project and shall not be loaned, copied or reproduced without written consent of the Architect.

# EnviroMed

Cleaner environment. Safer workplaces.

470 Murdock Avenue  
Meriden, CT 06450  
203-236-4846  
www.enviromedservices.com

PROJECT:

WHALLEY  
AVENUE  
DEVELOPMENT

117 WHALLEY AVENUE  
NEW HAVEN, CT

| ISSUE | DATE    | DESCRIPTION |
|-------|---------|-------------|
| 1     | 6/16/25 | BID SET     |
|       |         |             |
|       |         |             |
|       |         |             |
|       |         |             |
|       |         |             |
|       |         |             |
|       |         |             |

PHASE:

BID DOCUMENTS

PAUL B. BAILEY  
• ARCHITECT •

110 AUDUBON STREET  
NEW HAVEN, CONNECTICUT 06510  
203 • 776 • 8888 F 203 • 772 • 1365

|                     |                 |
|---------------------|-----------------|
| DATE: 6/2/25        | DRAWN BY: JL    |
| SCALE: 1/8" = 1'-0" | CHECKED BY: JEL |
| JOB NO: 20-047      |                 |

DRAWING NAME:  
117-129 WHALLEY AVE.  
ABATEMENT PLANS

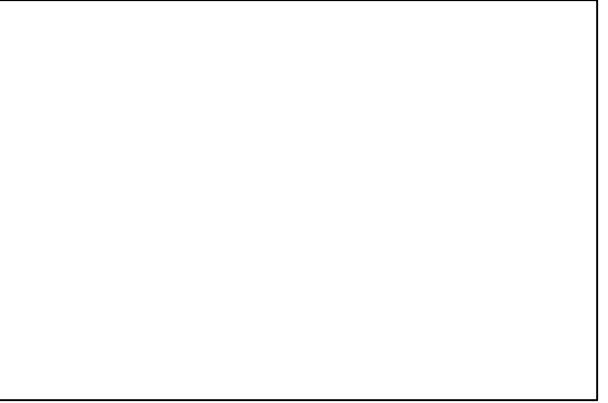
HM1.2



This drawing is not to be reproduced or used to contract any building without the written authorization of PAUL B. BAILEY ARCHITECT, LLC. This drawing and details on it, as an instrument of service, is the property of the Architect and may be used for this specific project and shall not be loaned, copied or reproduced without written consent of the Architect.

# EnviroMed

Cleaner environment. Safer workplaces.  
470 Murdock Avenue  
Meriden, CT 06450  
203-236-4846  
www.enviromedservices.com



PROJECT:

WHALLEY AVENUE DEVELOPMENT

117 WHALLEY AVENUE  
NEW HAVEN, CT

| ISSUE | DATE    | DESCRIPTION |
|-------|---------|-------------|
| 1     | 6/16/25 | BID SET     |
|       |         |             |
|       |         |             |
|       |         |             |
|       |         |             |
|       |         |             |
|       |         |             |

PHASE:

BID DOCUMENTS

PAUL B. BAILEY  
• ARCHITECT •

110 AUDUBON STREET  
NEW HAVEN, CONNECTICUT 06510  
203 • 776 • 8888 F 203 • 772 • 1365

|                     |                 |
|---------------------|-----------------|
| DATE: 6/2/25        | DRAWN BY: JL    |
| SCALE: 3/8" = 1'-0" | CHECKED BY: JEL |
| JOB NO: 20-047      |                 |

DRAWING NAME:

117-129 WHALLEY AVE.  
ABATEMENT PLANS

HM1.3

## PLAN NOTES

- GB

REMOVE AND DISPOSE OF RESIDUAL ACM GROUT RING FROM OLD BOILER EXHAUST FROM WALL USING THE GLOVEBAG REMOVAL TECHNIQUE.
- W

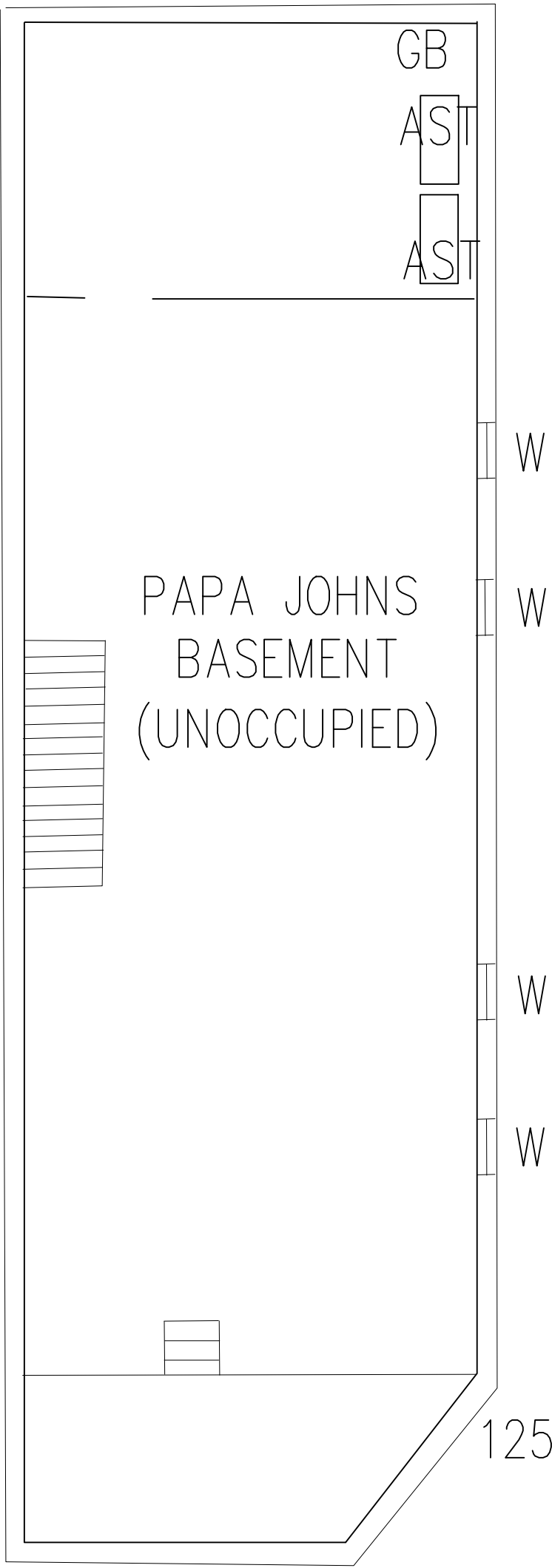
REMOVE OLD METAL WINDOW AND DISPOSE AS PRESUMED PCB BULK PRODUCT WASTE.
- AST

DRAIN AND DISPOSE OF RESIDUAL FUEL OIL FROM 275 GALLON FUEL OIL TANK. CUT TANK IN HALF AND CLEAN INTERIOR WITH RAGS AND GREASE-CUTTING SOLVENT. DISPOSE OF TANKS AS SCRAP METAL.

## GENERAL NOTES

1. ABATEMENT WORK IN THE 125 WHALLEY AVENUE BASEMENT TO OCCUR IN PHASE 1 DURING THE FIRST MOBILIZATION.

UTILITY TRENCH



1

BASEMENT PLAN – ABATEMENT

SCALE: 1/8" = 1' = 0"

PROJECT NORTH